



NX

NX300h



lexusindia.co.in  
Lexus Owner's Desk, 24/7  
1800 300 53987[1800 300 LEXUS]



## NEVER BLEND IN. NEVER, EVER.

Blending in is all about the 'what is', the world of clichés. The new Lexus NX F Sport, however is about the 'what if' - designed to bring about an amalgam of bold styling, hybrid power and unexpected pedigree to dominate the road. Moreover, the exclusive F SPORT package injects razor-sharp sports performance into the NX driving experience. In other words, you're just a breezy drive away from the commonplace.



NX 300h F SPORT



NX 300h LUXURY

## THE PERFECT GETAWAY, FROM SHEER MONOTONY.

Avoid the clichés, never belong and move away from the ordinary. The luxurious new Lexus NX is all about what an automobile could be - disruptively magical in its detail, unique in its personality and breathtakingly striking from every angle. Find the perfect excuse to escape the mundane and experience the exhilarating.



<NX 300h F SPORT>

The blend of functional and structural beauty and luxe details in the sporty interior boosts your driving pleasure. It embodies Lexus' human-oriented approach to driving, focusing on sports control to heighten driving exhilaration.



<NX 300h LUXURY>

The all-new Lexus NX isn't just made. It's crafted. Sculpted lines complement your personal style, technology responds to your very presence and its attention to detail delivers an unparalleled sense of luxury the moment you get behind the wheel.



<NX Colour Combinations>

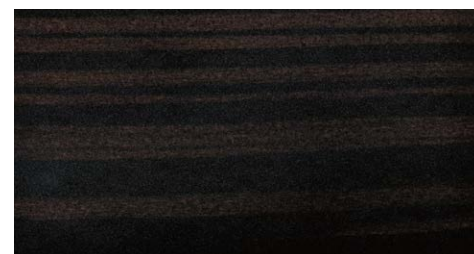
Code	LUXURY Exterior	Ornament	Leather						
			White Ocher		Rich Cream	Black	Dark Rose	Ocher	Accent White
			White instrument panel	Black instrument panel					
1H9	MERCURY GRAY MC.	WOOD	●	●	●	●	●	●	●
		BAMBOO	●	●	●	●	●	●	●
085	SONIC QUARTZ	WOOD	●	●	●	●	●	●	●
		BAMBOO	●	●	●	●	●	●	●
1J4	PLATINUM SILVER ME.	WOOD	●	●	●	●	●	●	●
		BAMBOO	●	●	●	●	●	●	●
1J7	SONIC TITANIUM	WOOD	●	●	●	●	●	●	●
		BAMBOO	●	●	●	●	●	●	●
212	BLACK	WOOD	●	●	●	●	●	●	●
		BAMBOO	●	●	●	●	●	●	●
223	GRAPHITE BLACK GF.	WOOD	●	●	●	●	●	●	●
		BAMBOO	●	●	●	●	●	●	●
3R1	RED MC. CS.	WOOD	●	●	●	●	●	●	●
		BAMBOO	●	●	●	●	●	●	●
4X2	AMBER CS.	WOOD	●	●	●	●	●	●	●
		BAMBOO	●	●	●	●	●	●	●
8X9	SPARKLING METEOR ME.	WOOD	●	●	●	●	●	●	●
		BAMBOO	●	●	●	●	●	●	●

Code	F SPORT Exterior	Ornament	Leather			
			F Sport White	F Sport Black	F Sport Flare Red	F Sport Mustard Yellow
083	WHITE NOVA GF.	NAGURI STYLE ALUMINIUM	●	●	●	●
085	SONIC QUARTZ		●	●	●	●
1H9	MERCURY GRAY MC.		●	●	●	●
1J4	PLATINUM SILVER ME.		●	●	●	●
1J7	SONIC TITANIUM		●	●	●	●
212	BLACK		●	●	●	●
223	GRAPHITE BLACK GF.		●	●	●	●
3R1	RED MC. CS.		●	●	●	●
4W7	LAVA ORANGE CS.		●	●	●	●
8X1	HEAT BLUE CONTRAST LAYERING		●	●	●	●
8X9	SPARKLING METEOR ME.	●	●	●	●	

<TRIM>



Aluminum <F Sport>



Shimamoku <Luxury>



Bamboo <Luxury>

<Exterior Colours>



White Nova GF. (083) <F Sport>



Sonic Quartz (085) <F Sport & Luxury >



Mercury Gray MC. (1H9) <F Sport & Luxury >



Platinum Silver ME. (1J4) <F Sport & Luxury >



Sonic Titanium (1J7) <F Sport & Luxury >



Black (212) <F Sport & Luxury >



Graphite Black GF. (223) <F Sport & Luxury >



Red MC. CS. (3R1) <F Sport & Luxury >



Lava Orange CS. (4W7) <F Sport>



Heat Blue Contrast Layering (8X1) <F Sport >



Sparkling Meteor ME. (8X9) <F Sport & Luxury >



Amber CS. (4X2) <Luxury >

< F SPORT Interior Colours> (Synthetic Leather)



F Sport White



F Sport Black



F Sport Mustard Yellow



F Sport Flare Red

< LUXURY Interior Colours> (Smooth Leather)



White Ocher (White Instrument Panel)



White Ocher (Black Instrument Panel)



Black



DK. Rose



Ocher



Accent White



Rich Cream

		LUXURY	F SPORT
<b>Exterior features</b>	LED Headlamp with Auto Levelling and Headlamp Cleaner	●	●
	LED Clearance & Cornering Lamp	●	●
	Front Turn Signal Lamp with LED Sequential	●	●
	Front Fog & Driving Lamp with LED	●	●
	Light Control System / Daytime Running Light System	●	●
	Rear Combination Lamp - LED Sequential	●	●
	High Mount Stop Lamp	●	●
	Rear Fog Lamp - LED	●	●
	Side Turn Signal Lamp (LED on Outer Side)	●	●
	Outside Rear View Mirror (Auto, Heater, EC, Memory)	Body Colour	Black
	Front Bumper & Grille / Rear Bumper	Normal	F SPORT
	Panoramic Roof (Fixed glass)	●	●
<b>Interior features</b>	Accelerator Pedal / Brake Pedal	Pendant type	Pendant type (Aluminum)
	Shift Lever & Knob	Leather	Leather F SPORT
	Inside Rear View Mirror (Day / Night EC)	●	●
	Door Scuff Plate	Front:SUS Rear:Resin	Front:F Sport SUS Rear:Resin
	Front Seat	LUXURY type	F SPORT type
	Rear Seat (6-4) Folding	Electric folding	●
	Seat Cover Material	Leather	F SPORT Leather
	Seat Headrest with Up & Down Adjustment	Front & Rear	Front & Rear
	Power (D+P) Front Seat Slide	●	●
	Seat Lumbar Support (D) Power 2way	●	●
	Seat Heater	Front & Rear	Front
	Seat Back Pocket (Front Seat only)	●	●
	Front Seat Adjuster (Power 8way(D+P) + Memory(D))	●	●
	Seat A/C (D+P Ventilate only)	●	X
	Multi Information Display (4.2 Inch Colour TFT)	●	●
	Tonneau Board	●	●
	Grand Spare Tire	●	●
	<b>Comfort &amp; Convenience</b>	Wireless Door Lock (Smart Entry)	●
Power Back Door with Kick Sensor		●	●
Cruise Control		●	●
Drive Mode Select (Eco, Normal, Sports & Sports+)		●	●
Sound Generator		X	●
Steering Column (EPS Tilt & Telescopic)		●	●
Steering Wheel		Leather with Heater & Paddle shift	F SPORT Leather with Heater & Paddle shift
AVS (TEMS)		●	●
Air Conditioner - Auto Dual Controlled		●	●
Navigation system		●	●
10.3inch Electro Multi Vision Display		●	●
Audio - Mark Levinson with 14 Speaker		●	●
Clearance & Back Sonar		●	●
Panoramic View Monitor		●	●
<b>Safety &amp; Security</b>	Anti Theft System (Break-in Sensor, Glass Break Sensor & Tilt Sensor)	●	●
	ABS + Vehicle Stability Control (with Cut Off Switch) + Hill Start Assist	●	●
	Power Door Lock (Auto Speed)	●	●
	Front Seat Belt - 3 Point ELR (Emergency Locking Retraction) + TR (Tension Reducer);Pretensioner & Force Limiter	●	●
	Rear Seat Belt - All Seats 3 Point ELR (Emergency Locking Retraction)	●	●
	8 Airbags (Front Driver & Passenger, Driver Knee, Front Passenger Cushion, Front Side & Curtain Shield Airbags)	●	●
Head Up Display	●	●	



<Specs>

2.5 Ltr. 4 Cylinder In-Line Type	145 kW
Engine Type	Hybrid System Total Max Output
114kW @ 5700 rpm	E-CVT
Max Output	Transmission
210Nm @ 4200-4400 rpm	185 mm
Max Torque	Ground Clearance

<Tire & Alloys>



<NX 300h F Sport>  
225/60R18 Tire  
18-inch aluminum wheels Black + Bright machined finish

<NX 300h Luxury>  
225/60R18 Tire  
18-inch aluminum wheels Black + Colored machining